

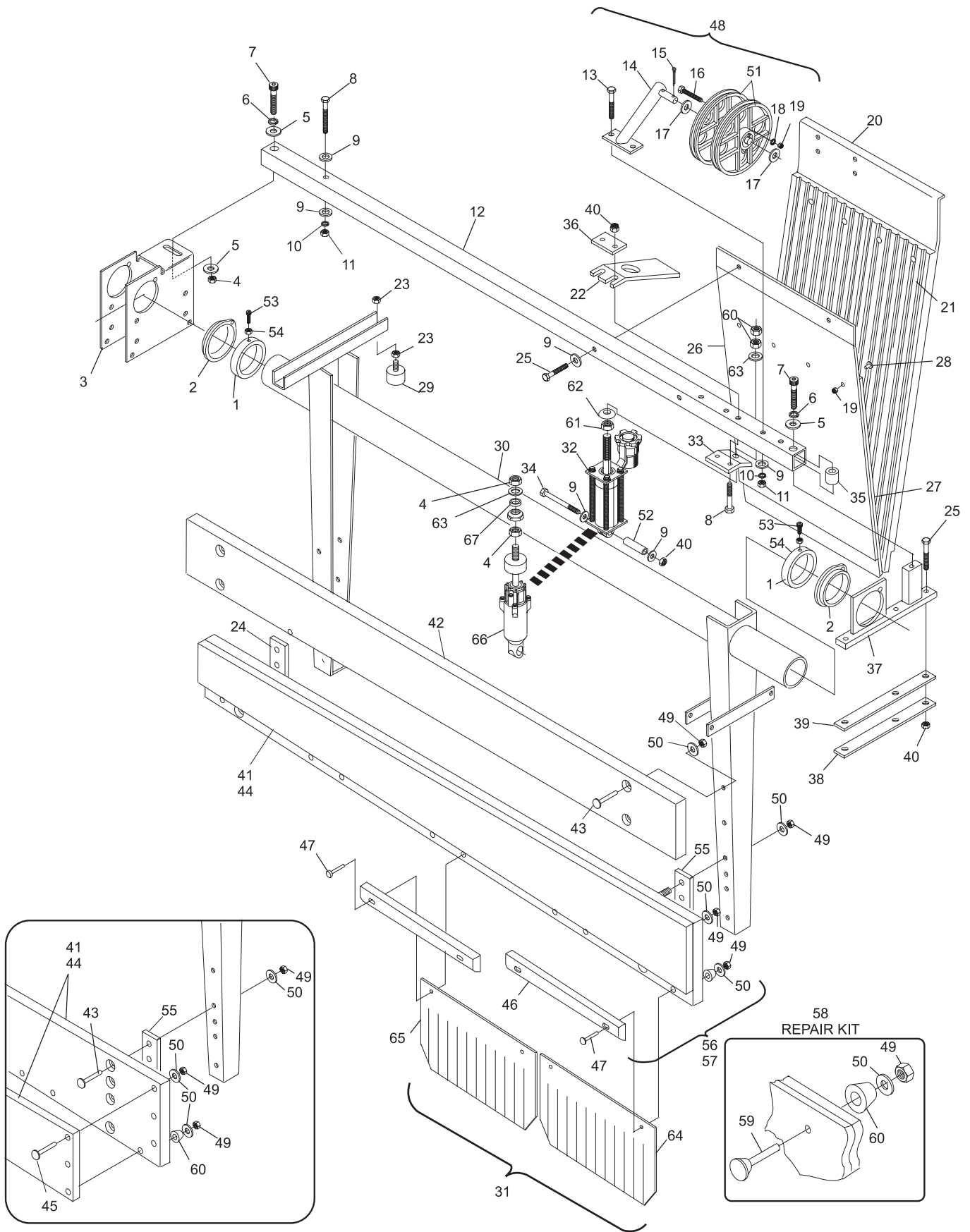
**Section C**

**BALL CUSHION & PIT CURTAIN**

Index			Index		
No.	Part No.	Description	No.	Part No.	Description
1.	47-020953-004	Stop Collar	32.	99-020148-002	Ball Cushion Hydraulic Complete
2.	99-010108-004	Bearing	33.	N.A.	Hydraulic Mounting Plate
3.	47-021466-001	Bearing Block	34.	11-051013-001	Hex Hd. Cap Screw (10 mm x 90 mm)
4.	11-051706-001	Hex Nut (12 mm)	35.	47-021110-004	Spacer
5.	11-052024-001	Flat Washer (13 mm x 30 mm x 1.6 mm)	36.	47-021120-004	Mounting Plate
6.	11-051772-001	Lockwasher (12 mm)	37.	47-020947-003	Bearing Block
7.	11-051553-001	Socket Hd. Cap Screw (12 mm x 60 mm)	38.	N.A.	Wood Shim (5 mm)
8.	11-051012-001	Hex Hd. Cap Screw (10 mm x 70 mm)	39.	47-021318-003	Wood Shim (10 mm)
9.	11-052050-001	Flat Washer (10.5 mm x 30 mm x 2.5 mm)	40.	11-051745-001	Locknut (10 mm)
10.	11-051771-001	Lockwasher (10 mm)	41.	47-025045-009	Ball Cushion Board with Facing (right-hand)
11.	11-051703-001	Hex Nut (10 mm)	42.	47-021872-003	Top Ball Cushion Board
12.	47-020948-003	Transverse Bar	43.	11-052620-001	Carriage Bolt (8 mm x 75 mm)
13.	11-051058-001	Hex Hd. Cap Screw (10 mm x 55 mm)	44.	47-025044-009	Ball Cushion Board with Facing (left-hand)
14.	47-021009-002	Pulley Holder	45.	11-052603-001	Carriage Bolt (8 mm x 45 mm)
15.	11-051786-001	Split Pin (2.5 mm x 25 mm)	46.	47-021010-003	Impact Strip (black)
16.	11-051014-001	Hex Hd. Cap Screw (6 mm x 45 mm)	47.	11-051055-001	Hex Hd. Cap Screw (8 mm x 60 mm)
17.	11-052012-001	Flat Washer (18 mm x 24 mm x 2 mm)	48.	47-021195-002	Pulley Holder Complete
18.	11-052048-001	Flat Washer (6.4 mm x 16 mm x 1.6 mm)	49.	11-051744-001	Locknut (8 mm)
19.	11-051743-001	Locknut (6 mm)	50.	11-052003-001	Flat Washer (8.4 mm x 17 mm x 1.6 mm)
20.	N.A.	Long Brake Plate (for single feed distributors)	51.	47-022410-003	Drive Pulley with Bearing
21.	N.A.	Rubber Material (rear)	52.	47-021112-004	Bushing
22.	47-022098-004	Hydraulic Protector Plate	53.	11-051515-001	Socket Hd. Cap Screw (6 mm x 18 mm)
23.	11-051704-001	Hex Nut (8 mm)	54.	11-051702-001	Hex Nut (6 mm)
24.	47-021489-004	Spacer (short)	55.	47-021488-004	Spacer (long)
25.	11-051057-001	Hex Hd. Cap Screw (10 mm x 60 mm)	56.	N.A.	Ball Cushion Frame Assembly (left-hand) Complete
26.	N.A.	Short Brake Plate	57.	N.A.	Ball Cushion Frame Assembly (right-hand) Complete
27.	N.A.	Rubber Material (forward)	58.	47-274281-009	Ball Cushion Repair Kit
28.	11-051879-001	Truss Hd. Machine Screw (6 mm x 20 mm)	59.	47-024276-004	Rubber Head Screws
29.	11-053578-000	Rubber Bumper - male (8 mm)	60.	47-023660-004	Cap
30.	47-020945-002	Ball Cushion Frame (for both right-hand and left-hand machines)	61.	N.A.	Jam Nut (12 mm x 8 mm)
31.	47-274888-009	Cushion Flap Kit Complete	62.	47-021119-004	Special Round Top Nut (12 mm)
			63.	11-052015-001	Flat Washer (13 mm x 24 mm x 3 mm)
			64.	N.A.	Cushion Flap (right-hand)
			65.	N.A.	Cushion Flap (left-hand)
			66.	99-020402-002	Ball Cushion Hydraulic - Complete (Machine Series 442 & Above)
			67.	47-021108-004	Spacer (used in new and old Shock)

N.A. = No Longer Available

## Ball Cushion Assembly



**Ball Cushion Assembly**

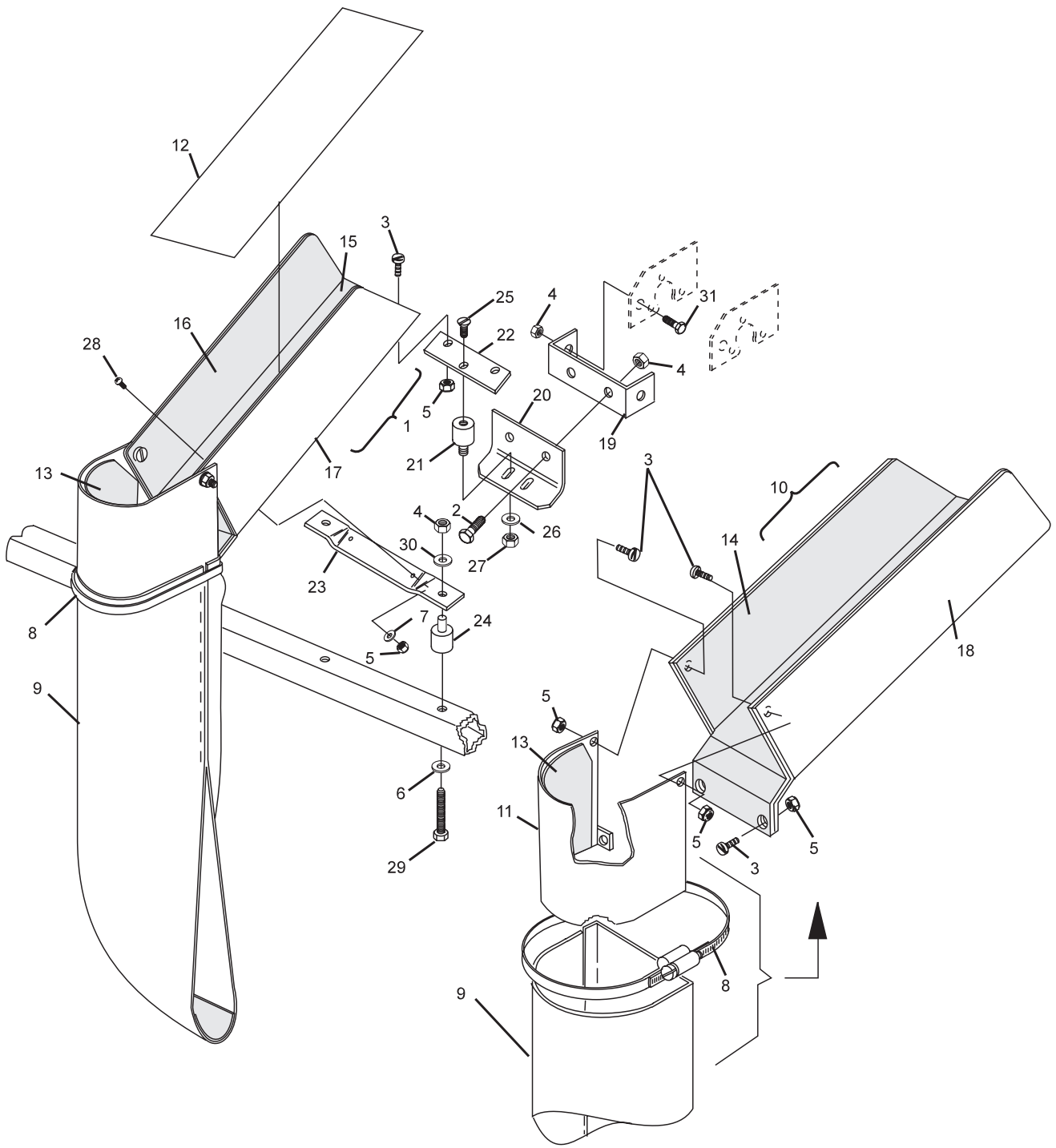
Index No.	Part No.	Description
1.	*47-092332-003	Overflow Chute Complete (right-hand, long pit version)
	*47-095186-009	Overflow Chute Complete (right-hand, short pit version) - see page 6C
2.	11-051043-001	Hex Hd. Cap Screw (8 mm x 12 mm)
3.	11-052361-001	Pan Hd. Machine Screw (5 mm x 12 mm)
4.	11-051744-001	Locknut (8 mm)
5.	11-051742-001	Locknut (5 mm)
6.	11-052019-001	Flat Washer (8.4 mm x 25 mm x 2 mm)
7.	11-052039-001	Fender Washer (5.3 mm x 15 mm x 1.2 mm)
8.	11-603301-000	Overflow Chute Clamp
	47-862780-000	Chute Clamp Kit (consists of 10 clamps only -no banding.)
9.	47-092529-000	Sock (white)
	47-022530-000	Sock (black)
10.	**47-092333-003	Overflow Chute Complete (left-hand, long pit version)
	**47-095187-009	Overflow Chute Complete (left-hand, short pit version) - see page 6C
11.	47-092298-003	Sock Brace Only
12.	47-092527-000	Pin Wipe
13.	47-092310-004	Felt (for Sock Brace)
14.	47-092448-004	Felt (for inside wall, long pit version)
	47-094073-004	Felt (for inside wall, short pit version)
15.	47-092449-004	Felt (for bottom, long pit version)
	47-094075-004	Felt (for bottom, short pit version)
16.	47-092450-004	Felt (for outside wall, long pit version)
	47-094076-004	Felt (for outside wall, short pit version)
17.	N.A.	Overflow Chute Only (right-hand, long pit version)
	N.A.	Overflow Chute Only (right-hand, short pit version)
18.	N.A.	Overflow Chute Only (left-hand, long pit version)
	N.A.	Overflow Chute Only (left-hand, short pit version)
19.	47-093749-004	Bracket
20.	47-094355-004	Bracket
21.	11-053575-000	Rubber Mount
22.	47-094356-004	Plate
23.	47-094357-004	Plate
24.	11-053585-000	Rubber Mount
25.	11-052928-001	Countersunk Screw (6 mm x 10 mm)
26.	11-052048-001	Flat Washer (6.4 mm x 16 mm x 1.6 mm)
27.	11-051743-001	Locknut (6 mm)
28.	11-052369-001	Pan Hd. Machine Screw (5 mm x 16 mm)
29.	11-051011-001	Hex Hd. Cap Screw (8 mm x 50 mm)
30.	11-052006-001	Flat Washer (8.4 mm x 20 mm x 2 mm)
31.	11-051038-001	Hex Hd. Cap Screw (8 mm x 16 mm)

*N.A. = No Longer Available*

*\* Includes Index Nos. 3,5,7,8,9,11,13,14,15,16 and 17*

*\*\* Includes Index Nos. 3,5,7,8,9,11,13,14,15,16 and 18*

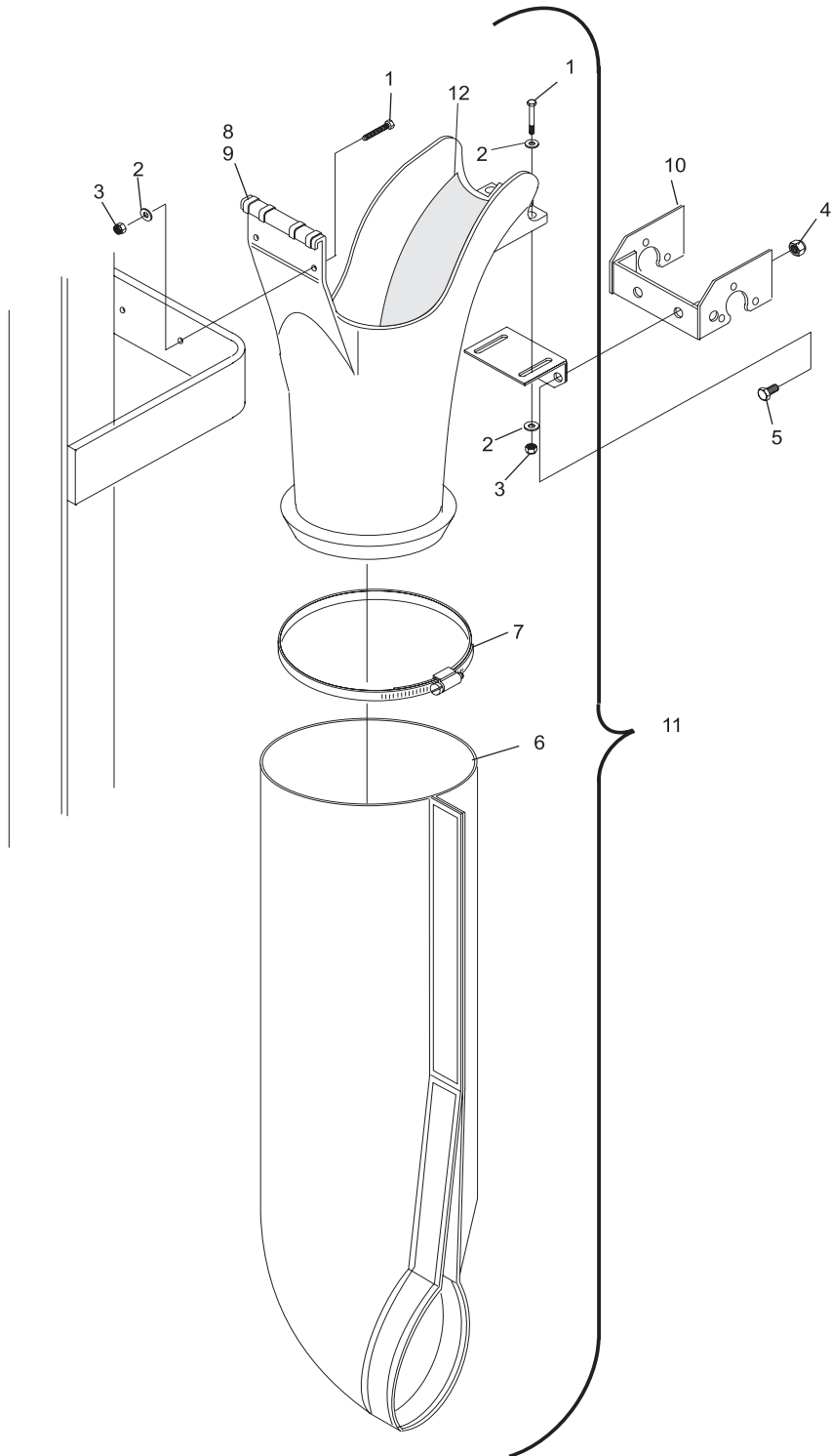
## Dual Feed Overflow Chute



**Dual Feed Overflow Chute**

<b>Index No.</b>	<b>Part No.</b>	<b>Description</b>
1.	11-051030-001	Hex Hd. Cap Screw (5 mm x 20 mm)
2.	11-052039-001	Flat Washer (5.3 mm x 15 mm x 1.2 mm)
3.	11-051742-001	Locknut (5 mm)
4.	11-051744-001	Locknut (8 mm)
5.	11-051043-001	Hex Hd. Cap Screw (8 mm x 12 mm)
6.	47-022530-000	Sock (black)
7.	11-603301-000	Overflow Chute Clamp
8.	47-095079-001	Plastic Chute (left-hand)
9.	47-095078-001	Plastic Chute (right-hand)
10.	47-095080-004	Bracket
11.	47-095186-009	Chute Assembly Right-Hand
	47-095187-009	Chute Assembly Left-Hand
12.	47-860003-000	Pin Wipe

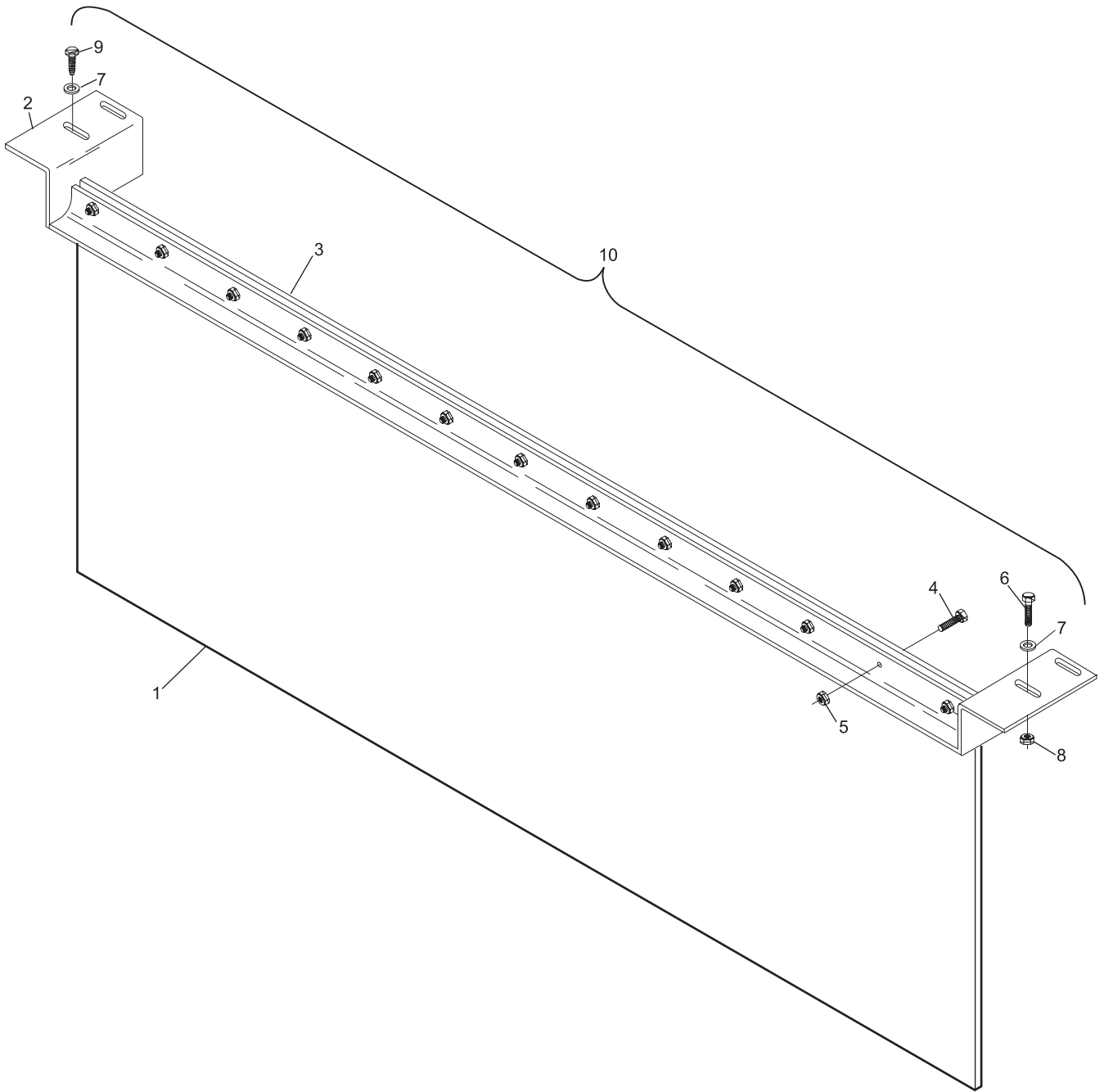
**Dual Feed Overflow Chute  
(Plastic)**



**Dual Feed Overflow Chute  
(Plastic)**

<b>Index No.</b>	<b>Part No.</b>	<b>Description</b>
1.	47-021084-004	Curtain
2.	47-021088-002	Pit Curtain Holder
3.	N.A.	Pit Curtain Support Bracket
4.	11-051533-001	Socket Hd. Cap Screw (8 mm x 25 mm)
5.	11-051744-001	Locknut (8 mm)
6.	11-051005-001	Hex Hd. Cap Screw (10 mm x 20 mm)
7.	11-052006-001	Flat Washer (8.4 mm x 20 mm x 2 mm)
8.	11-051745-001	Locknut (10 mm)
9.	11-053302-001	Wood Lag Screw (10 mm x 40 mm)
10.	47-021196-002	Pit Curtain Assembly Complete

*N.A. = No Longer Available*



### Pit Curtain Assembly